

NAME: Dragonfly (CD p304)
PLAYER:

VALUE	CHAR	COST	BASE	PTS
10	Strength	x1	10	0
26	Dexterity	x3	10	48
25	Constitution	x2	10	30
9	Body	x2	10	-2
13	Intelligence	x1	10	3
8	Ego	x2	10	-4
10	Presence	x1	10	0
2	Comeliness	x1/2	10	-4
9	Physical Defex	1	2	7
14	Energy Defens	x1	5	9
6	Speed	x10	3.6	24
8	Recovery	x2	7	2
50	Endurance	x1/2	50	0
27	Stun	x1	27	0
Characteristics Cost:				113

STR Roll: 11-	Run	6"
DEX Roll: 14-	Swim	2"
INT Roll: 12-	Jump	2"
EGO Roll: 11-	Flight	18"
PER Roll: 12-		

Experience: 0

DISADVANTAGES	BASE:	100+PTS
Distinctive,not concealable,extreme		25
Hunted,"VIPER",more powerful,non-combat influence,harsh,appear 8-		20
Hunted,"Superhero group", more powerful,harsh, appear 8-		15
Psych Lim,"Sensitive about appearance",very common, strong		20
Psych Lim,"Metes out "justice",very common, strong		20
Public ID,"James MacDonald"		10
Susc,"Insecticides", common,per phase,2D6		25
Vuln,"Physical attacks", very common,x1 1/2 stun		15

Disadvantages Total : 150
Experience Spent + 0
Total Points = 250

ENEMIES

PTS	POWERS	END
10	360 Degree Sensing, Sight Group	
7	Sonar,OAF(-1)	
27	4D6 EB,No Range(-1/2), NND(+1),Defense: Armor, Poison Resistance	4
50	10D6 EB	5
22	18" Flight,OAF(-1),1/2 END(+1/4)	2
	==Skills==	
5	KS: Genetics 14-	
4	KS: Insects 13-	
6	3 Levels	
6	2 Levels,tight group	

Base OCV: 9 Base DCV: 9
 Adjustment + Adjustment +
 Final OCV = Final DCV =

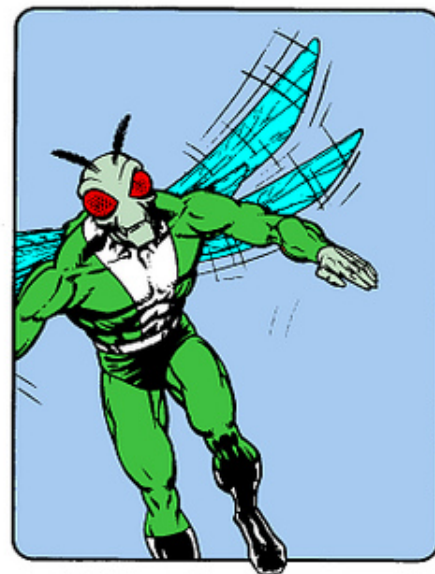
Maneuver	Phase	OCV	DCV	Effect
Block	1/2	+0	+0	stops attack
Brace	0	+2	1/2	+2 vs RMod
Disarm	1/2	-2	+0	STR vs STR
Dodge	1/2	+0	+3	all attacks
Grab	1/2	-1	-2	grab, do STR
Haymaker	1/2	+0	-5	x1 1/2 STR
Move By	1/2	-2	-2	STR/2+v/5
Move Through	1/2	-v/5	-3	STR+v/3
Set	1	+1	+0	

Rang	<4	<8	<16	<32	<64	<128
RMod	-0	-2	-4	-6	-8	-10

DEX: 26 SPD: 6 ECV: 3
 Phases - 2 - 4 - 6 - 8 - 10 - 12
 PD/rPD 9/ 0 ED/rED 14/ 0
 END: 50 STUN: 27 BODY: 9

3D6	Loc	StunX	NStun	BodyX	CV	Armor
3-5	Head	x5	x2	x2	-8	
6	Hands	x1	x1/2	x1/2	-6	
7-8	Arms	x2	x1/2	x1/2	-5	
9	Shoulders	x3	x1	x1	-5	
10-11	Chest	x3	x1	x1	-3	
12	Stomach	x4	x1 1/2	x1	-7	
13	Vitals	x4	x1 1/2	x2	-8	
14	Thighs	x2	x1	x1	-4	
15-16	Legs	x2	x1/2	x1/2	-6	
17-18	Feet	x1	x1/2	x1/2	-8	

NOTES



137 : Powers Total
 113 + Characteristic Total
 250 = Total Cost